



Ed Landgraf:

- **Director of Marine Safety and Operations at Texas811**
 - **Chairman of CAMO – Coastal and Marine Operators**
 - **MarineSafe811 Program Manager**
- **Co- Chair of the Pipeline Task Force – Joint effort between Dredgers, Pipeline Industry, Agencies and 811 - Enhance Safety Best Practices, Awareness and Education**



CAMO Members and Partners



Louisiana



ExxonMobil



KINDER MORGAN

Ed Landgraf
Chairman

Pontchartrain
Conservancy



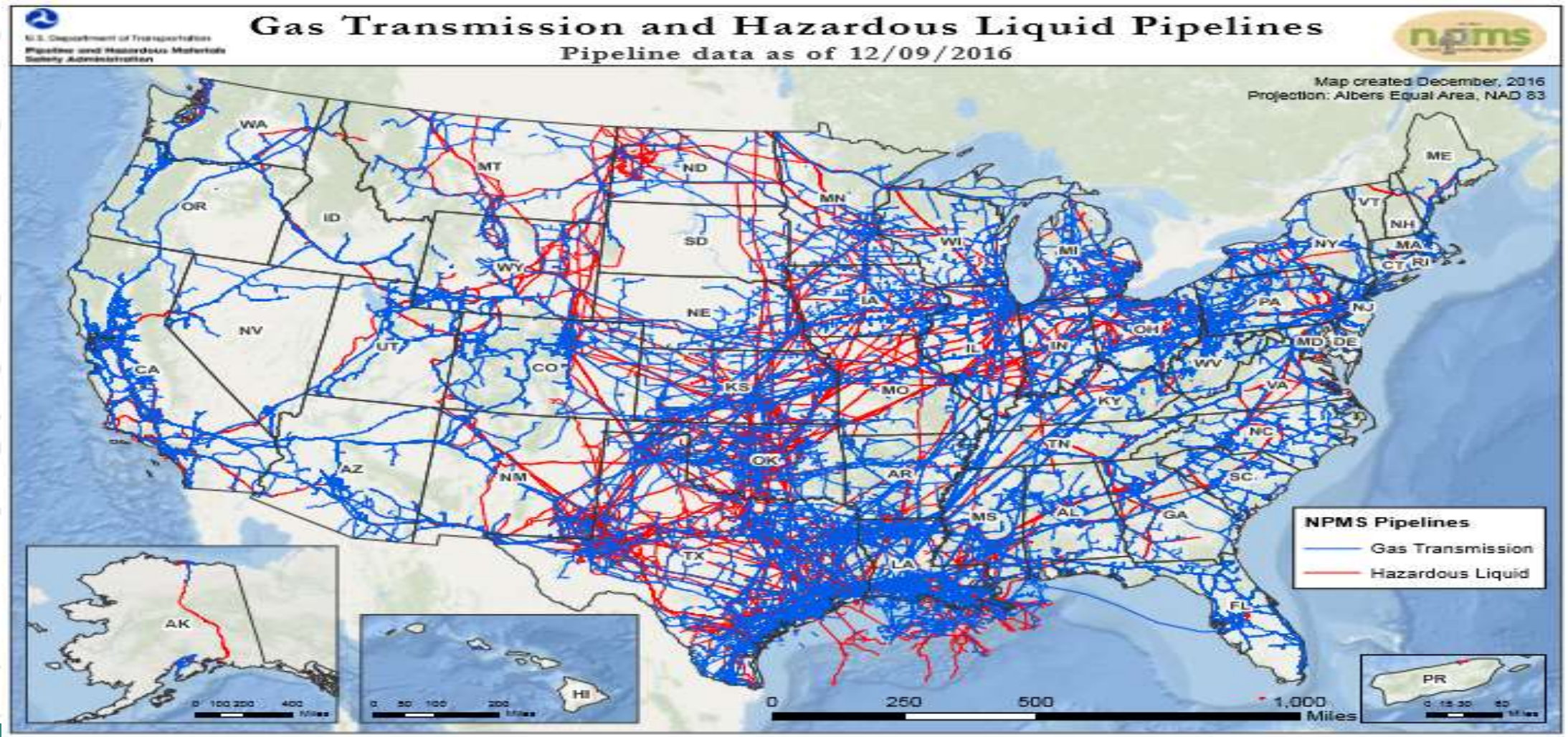
ed@camogroup.org
www.camogroup.org



Ph. (985) 209 4753



Protecting US Pipeline Infrastructure from disruptions, is critical to our Economic and Energy Security – “In Marine and Coastal Areas”



The US has over 2.7 million miles of energy pipelines, the Gulf Coast and Central US has the majority.



US Gulf Coast Energy Statistics:

(Most of which is transported via pipeline)

- Provides over 40% of all energy consumed in the US
- LA. and TX. are home to four US Strategic Petroleum Reserve underground storage facilities
- MS. LA. and TX. Combined refining capacity is over 7.5 million barrels a day, which is 43% of the total US market share
- Henry Hub, located near Erath, La. has a nexus of 13 natural gas pipeline systems that carry approximately 49 percent of US wellhead production to US markets
- Over 2.6 million barrels of crude oil traverses the Gulf Coast each day through pipelines, much from the over 2000 platforms in the Gulf of Mexico
- Over \$6 billion of federal revenue is generated each year from the Gulf Coast OCS oil and gas production, this is Second only to the IRS in total US Gov't Revenue



811 Program



Our Purpose:

To protect billions of dollars in underground infrastructure and keep the public safe, protects infrastructure, prevents releases and spills.

- **All 50 states have their own 811 center and law – 811 is not regulated nationally**
- Most states have online ticketing and take verbal Spanish calls
- EVERY 'one call' locate ticket submitted in Texas or other states is managed within that state.
- Texas811 averages 19-21k locate tickets submitted per day. Over 4,000,000 incoming tickets per year.
- Texas811 is the link between your plans to dig or excavate and our member utility companies.
- There is no cost for making the 811 call. But there is a waiting period to mark the lines (Texas has a 48 Hour waiting period required)
- Texas811 also provides excavation education to excavators, emergency responders and the general public.



Excavation: Defined By The Law



Excavate: Movement of earth by any means (onland or marine)

Excavator: A person that engages in or is preparing to engage in the movement of earth



Before Excavation Beings

- Plan Ahead
- Do a Worksite Assessment
- Communicate with:
 - Office Personnel
 - Field Crews
- Gather Worksite Information:
 - Location
 - Driving Instruction
 - Marking Instructions
 - Type of Work
 - Onsite Employee Contact Information
- White-line Proposed Worksite
- **Make the 811 notification**



A. Located near roads, railroads and along the pipeline ROWs
B. Marker for pipeline patrol plane C. Pipeline casing vent D. Painted metal or plastic posts

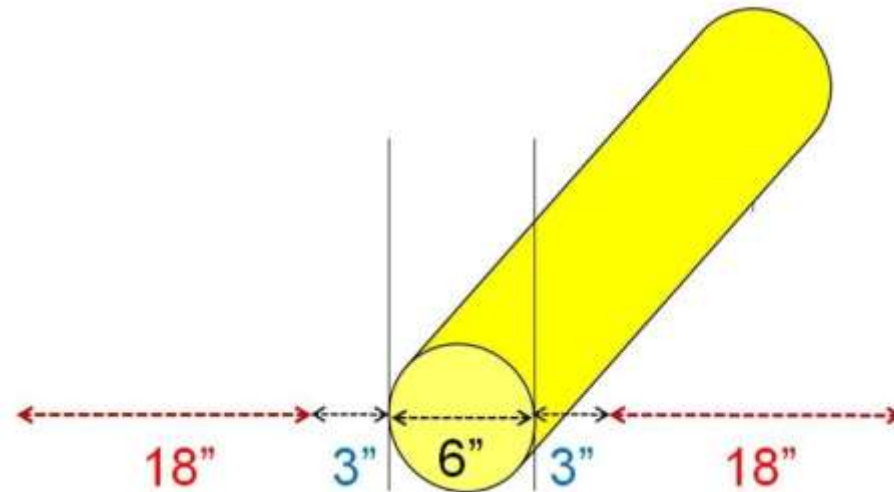


Tolerance Zone Laws

Half the nominal diameter of the underground pipeline plus a minimum of 18 inches on either side of the outside edge of the underground pipeline on a horizontal plane.

You can utilize “Utility Potholing” or “Daylighting” to expose underground facilities.

Do not apply for Marine – “Hydo – Excavation” is no good – 75ft Tolerance zone



ANY On Land or **Underwater** **bottom contact notify 811 prior**

By law most states require 811 Notifications for work in the water.

7 day advance notice is recommended



**LAW: ANY Movement or Removal
of Earth either On Land or
Submerged must have a 811/ One
Call Notification.**

**Beware: Abandon or Unused lines may cause issues
and are not required to be in the 811 system**

**New Effort: Corps Levees and other critical
Infrastructure can be protected by listing those
assets in the 811 system**





New MarineSafe 811 Damage Prevention, Education and Safety Program

Goals: Save Lives and enhance 811 awareness. Provide support for underwater pipeline and utility crossings concerns. Reduce safety, environmental, and system downtime risks to marine lines through education, support and awareness.

Program Details:



- 811 direct marine SME support
- Best Practices for Underwater Line Damage Prevention
- **FREE Online Training for stakeholders**
- Marine/ Underwater Utility Online Resource library available with presentation and videos
- In-person or virtual marine risk evaluation
- Work to enhance 811 notifications from marine partners and include them in future 811 awareness/ venues.
- www.camogroup.org for training and resources until the new **MarineSafe811 site is active in Q2 2024**

Support Questions : Ed Landgraf Ed@Texas811.org or 985 209 4853



Port of Corpus Christi Dredge Pipeline Accident, 5 killed

By Associated Press Texas Aug. 21, 2020

CORPUS CHRISTI, Texas — A dredging vessel at the Port hit a propane pipeline. Explosion and fire resulted in 5 deaths.

After Action: NTSB investigation that produced recommendations to PHMSA, CAMO, Dredge Org, Dredger and Pipeline Company.

A national “Pipeline Task Force” was formed consisting of 10 Dredge Reps, 10 Pipeline Reps, and 6 Regulatory Agencies. All working to enhance safety.



**April 17, 2018
Dredge/ Pipeline
Explosion
(Matagorda, Tx)**

**NTSB –
811 was not properly
used, because work
continued
outside of the
notification area.**



The dredger Jonathon King Boyd on fire near Port O'Connor, Texas, April 17, 2018. Photo courtesy [Maritime Throwdown](#)

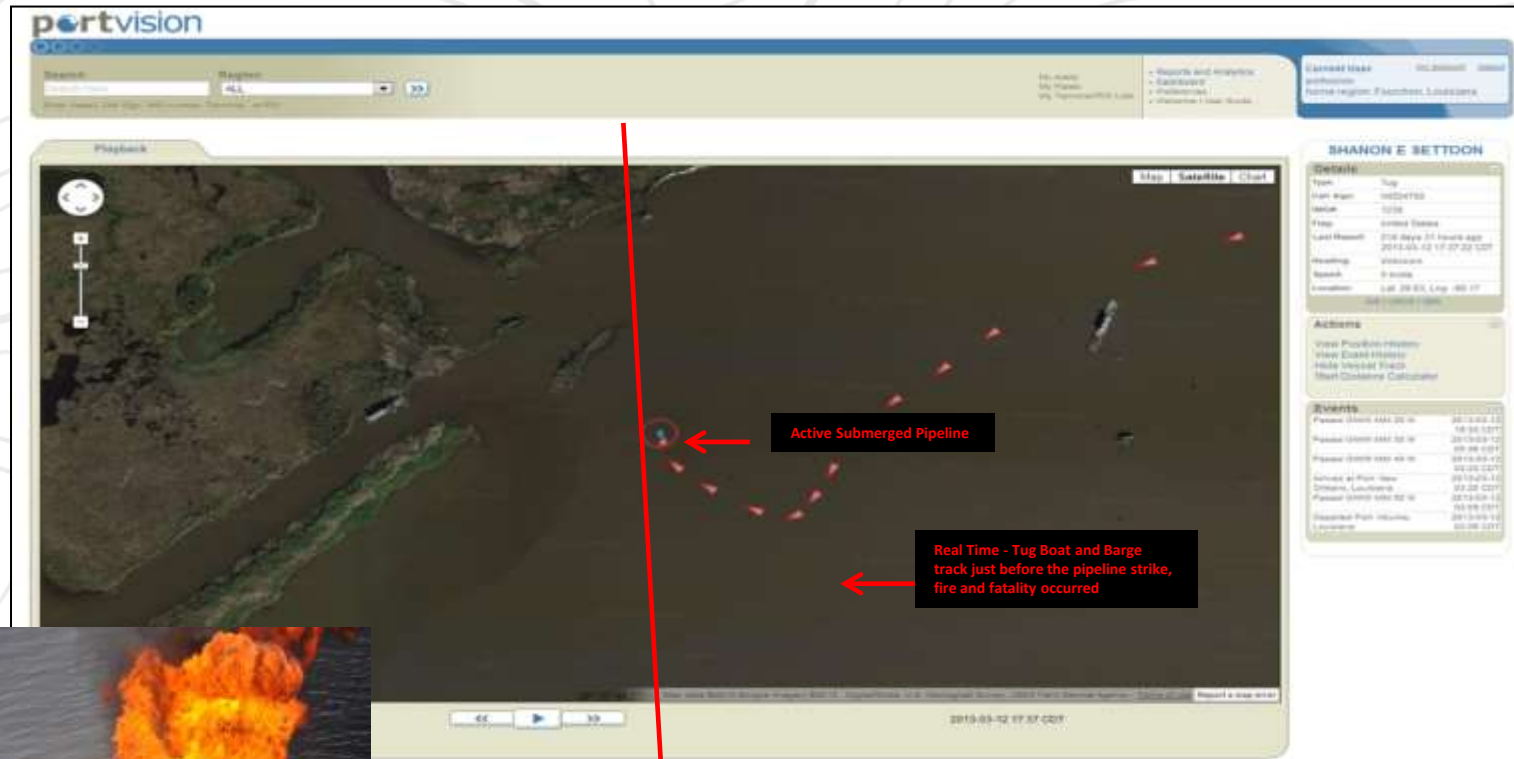
First, RLB Contracting was required to alert the Texas Notification System before commencing the accident section of the dredging project. However, based on the evidence this notification did not take place. When the Notification System received notification about a new project, a ticket would be generated and a copy provided to the notification source. Neither the company nor the Texas Notification System was able to locate a ticket for the dredging location where the accident occurred.



Inland Waters – 2013: Barge and Tow strikes NGL Pipeline Kills the Captain



AIS monitoring is a Great Tool and Marine Facts



- **All Marine Situations are all 10x (Times) what they are on-land**
- **Marking, Downtime, Response. Repair**
- **Emergencies and Evacuation**



Houston Ship Channel – Hurricane Harvey Anchor Drag Near Miss to large active pipeline. (Tracked by AIS)

Sever Weather Contributes to California – Oil Spill “Anchor Drag” 2021

On **October 2nd, 2021**, a major oil spill in Southern California, from an underwater pipeline near Long Beach, California. The crack apparently occurred as a result of hits from two anchors from cargo ships.



Marine Pipeline Incidents Statistics

Over the Past 20 years



Pipeline Strikes Reported	118
<u>Fatalities ~ 1 a yr average</u>	25
Personnel Injuries	17
Environmental Impact - Pipeline Spills	100,000 bbls

Spills in Coastal/ Marine Environments can average over \$10,000 a bbl. just to clean up and lead to long term infrastructure and energy supply downtime!

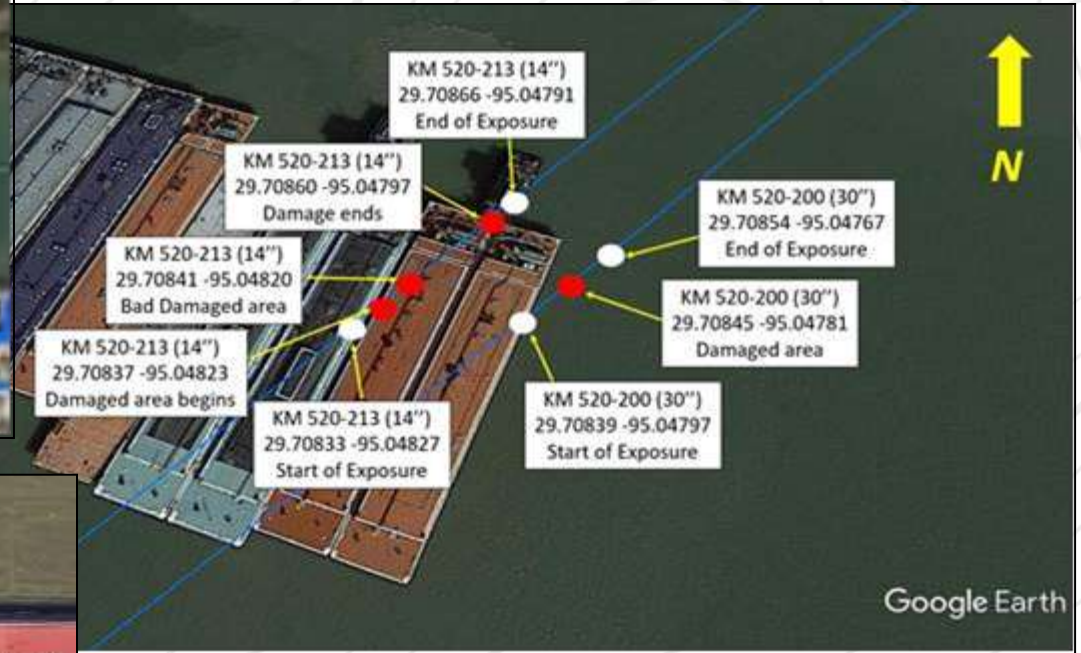
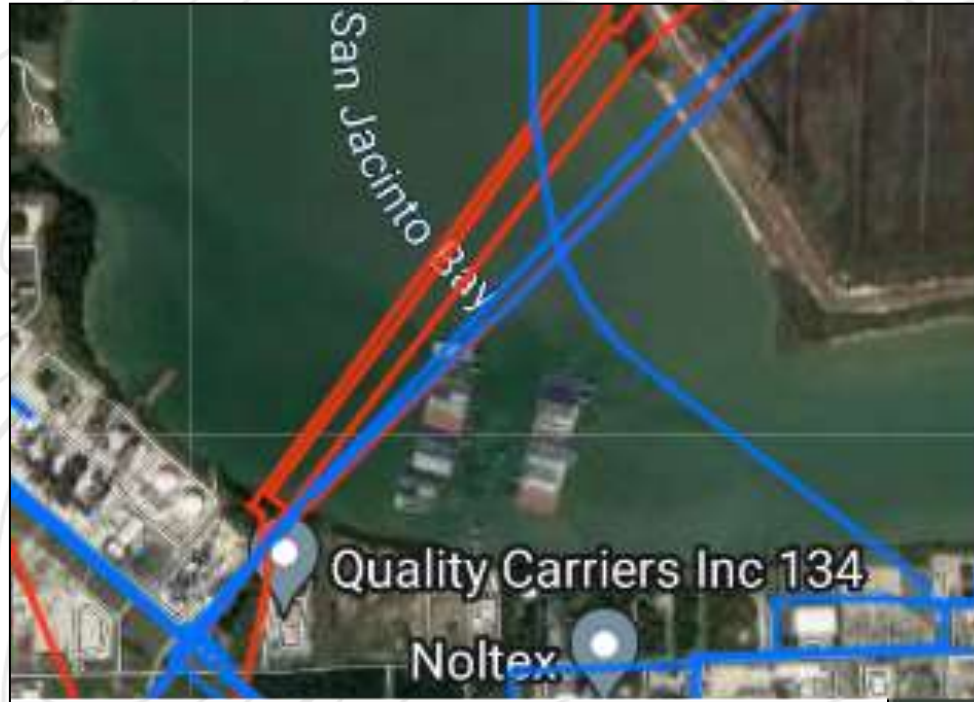


Threats: Anchors, Dredging and Marine Construction Equipment



Houston Ship Channel - Upper San Jacinto Bay

Barge Strikes Over Pipelines



Current Texas Port Expansion Projects (and most of the US)

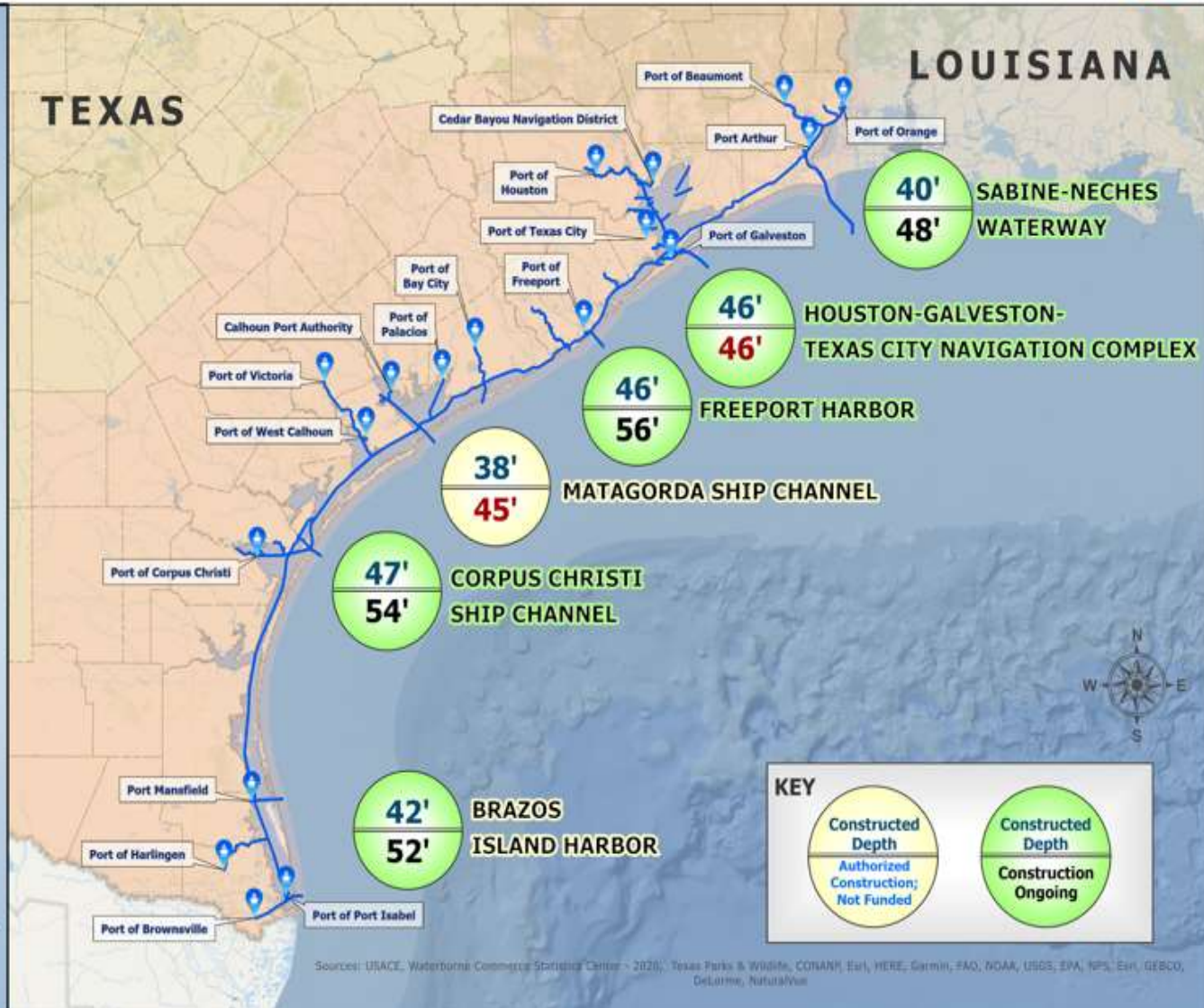


TEXAS PORTS

COASTAL NAVIGATION VALUE TO THE NATION



- LEADING U.S. PORTS**
(2020 tonnage)
- Houston #1 – 275.9 million tons**
#1 Foreign Tonnage & Total Tonnage
 - Corpus Christi #3 – 150.8 m.tons**
America's Energy Gateway
 - Beaumont #8 – 70.6 m.tons**
#1 Military Port in World
 - Port Arthur #15 – 41.2 m.tons**
Vital Break-Bulk Port
 - Freeport #16 – 38.7 m.tons**
Connecting Global Services
Via Caribbean Relay Port
 - Texas City #20 – 33.7 m.tons**
Services Largest Petrochemical Complex
 - Galveston #46 – 11.9 m.tons**
#1 Cruise Ship Port in gulf
 - Brownsville #66 – 6.8 m.tons**
#1 Ship Recycling Port
 - Sabine Pass Port #73 – 5.5 m.tons**
First in the U.S. with crude oil imports.
 - Calhoun County Port #77 - 4.8 m.tons**
(Matagorda Ship Channel)



Sources: USACE, Waterborne Commerce Statistical Center - 2020; Texas Parks & Wildlife, CONANI, Earl, HERE, Garmin, FAO, NOAA, USGS, EPA, NPS, Ecol, GEBCO, DeLorme, NaturalView



Dredge and Pipeline Tour/ Meeting Dec 6 - Aboard the Callan Dredge MacArthur - Houston Ship Channel



Get Free Safety Resources at www.camogroup.org and at MarineSafe 811 “Coming Soon”

camogroup.org

New Online Training: Working Safely Near Underwater Pipelines

[Click here to Register](#)

CAMO

Coastal and Marine Operators Pipeline Industry Initiative

[Purpose, Actions, and Goals](#)

[Members and Board](#)

[Downloads](#) 



Emergency

An emergency is a situation that requires immediate attention and action. It can be a natural disaster, a man-made accident, or a medical emergency. In the offshore industry, emergencies can be particularly dangerous and costly. This document provides a comprehensive overview of emergency procedures, including the roles and responsibilities of all personnel involved. It covers the types of emergencies that can occur, the signs and symptoms of an emergency, and the steps that should be taken to respond to an emergency. It also includes a checklist of emergency procedures and a list of emergency contacts.



Recommended Best Practices Guide & Checklist for Damage Prevention

Safety

Safety is the most important aspect of any offshore operation. It is the responsibility of all personnel to ensure that they are working in a safe and sound manner. This document provides a comprehensive overview of safety procedures, including the roles and responsibilities of all personnel involved. It covers the types of safety hazards that can occur, the signs and symptoms of a safety hazard, and the steps that should be taken to prevent a safety hazard. It also includes a checklist of safety procedures and a list of safety contacts.

Best Practices and Tip Cards

**Click here to
Download PDF**



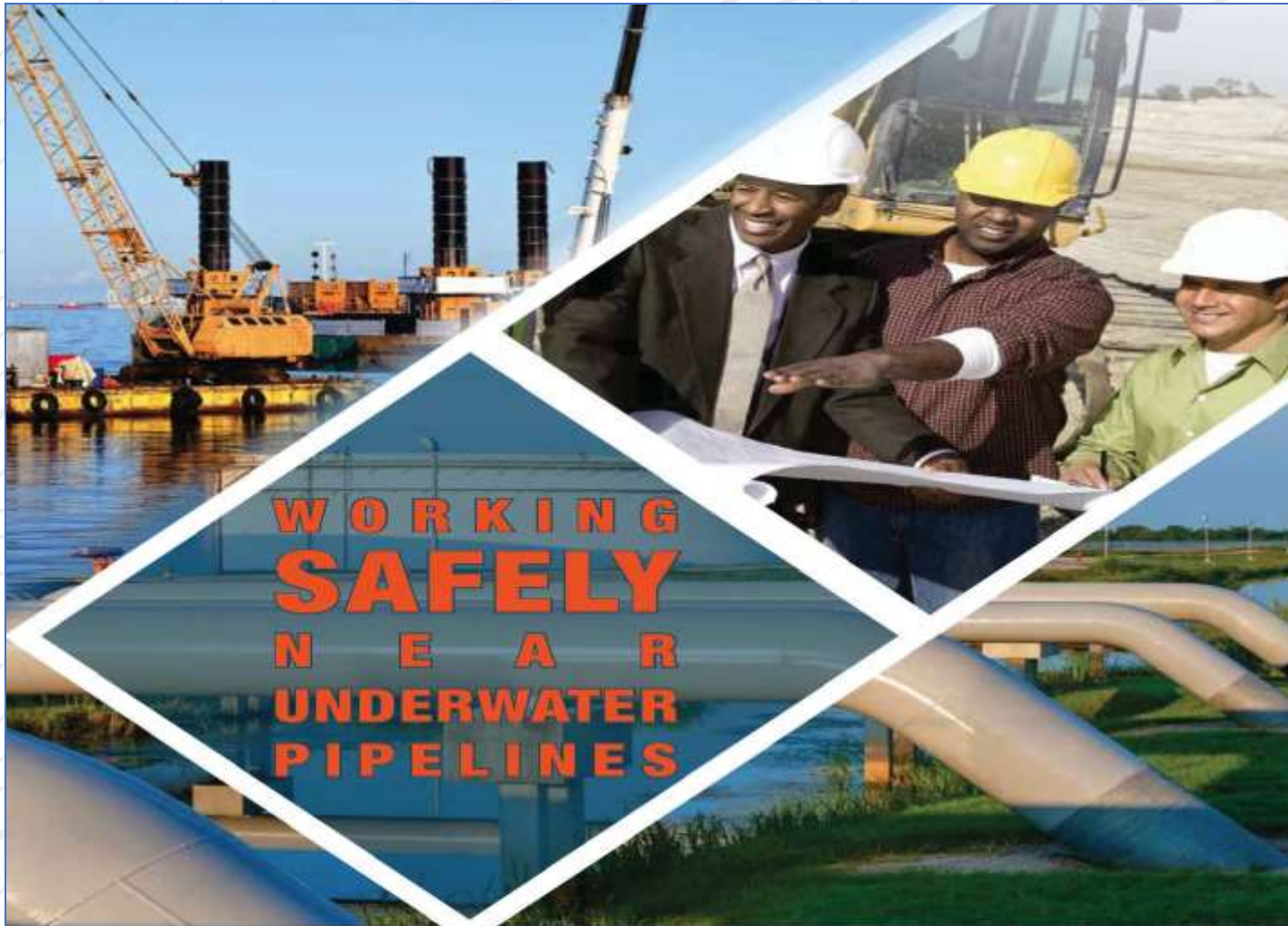


1 of 10



The training is for: personnel in construction, dredging, coastal restoration, pipeline companies, security, ports, mariners, agencies and emergency responders.





**WORKING
SAFELY
NEAR
UNDERWATER
PIPELINES**

**Recommended Best Practices Guide
& Checklist for Damage Prevention**



Current Damage Prevention, Education and Safety Activities

- 2024 Update Best Practice and Updated Online Training
- Develop a Marine/ Underwater Utility Resource Center (Texas811 and CAMO joint effort) – **called MarineSafe811**
- Work with **marine partners** to build on success
- Working with TSA/ DHS on Infrastructure Security

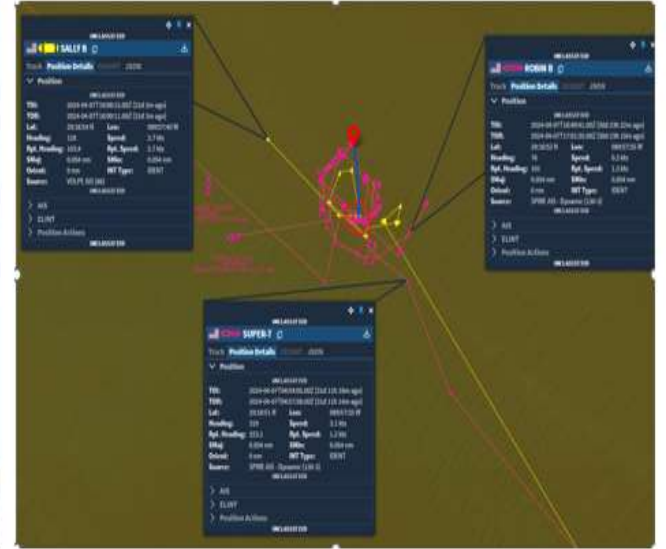


Emergency Response: Education and Awareness is also key.

Goals: Enhance processes for marine pipeline and utility: mariner, public, environmental safety, and infrastructure damage prevention.



Recent Pipeline Spud Barge Near Miss – Abandoned with spud deployed – adrift near 4 active pipeline – worked with USCG and Corps to mitigate threat.



Baltimore "Key" Bridge Collision March 26



Active Gas Line Under Ship - Water and Telecom in area





Provided response guidelines on how to respond without utility damage

811 for – staging sites, spud, **anchor spread**, support vessels





Ed Landgraf:

- **Director of Marine Safety and Operations at Texas811**
 - **Chairman of CAMO – Coastal and Marine Operators**
 - **MarineSafe811 Program Manager**
- **Co- Chair of the Pipeline Task Force – Joint effort between Dredgers, Pipeline Industry, Agencies and 811 - Enhance Safety Best Practices, Awareness and Education**

